

BOG #310 on MILL-BROOK RIDGE

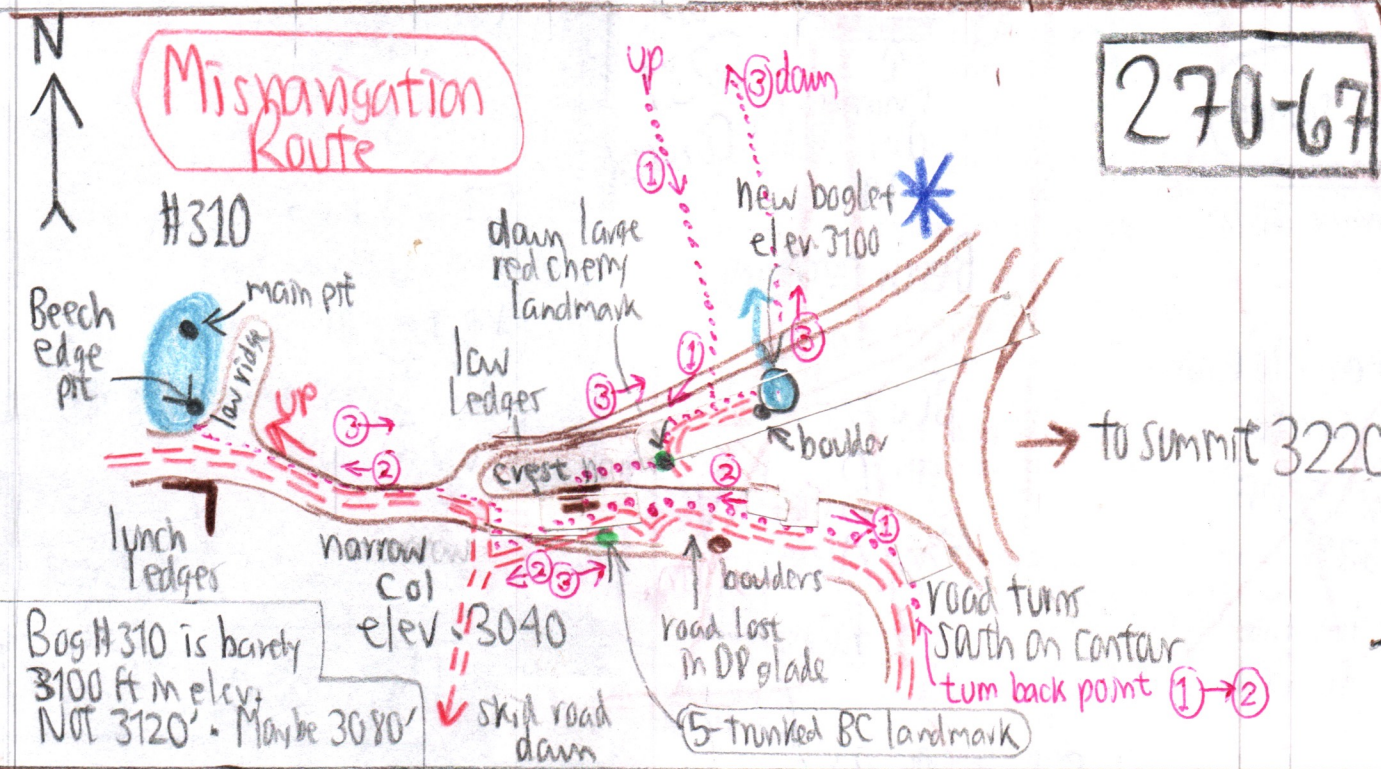
with Richard McIntosh via Kelly Hollow 5/29/'01

270-67

Location	P	Δp	Δe	e calc	e map	time	R
Trailhead East Kelly Hollow	29.72	—	—	—	1780	9:00	3100-2230'
Pond	29.22	0.00	0	2230	2230	9:40	29.22-28.26" = 870' = 0.906
Polystichum braunii disintegrating ledges	29.07	0.15	136	2366		↓	
Bog # 310	28.26	0.96	870	3100	3100	± 11:20* to 1:10	
"new" bog	28.26	0.96	870	3100		1:25 to 1:55	R = 0.906
10 Nettles, OST Spring # 1317	28.93	0.29	263	2493		↓	
Pond	29.07	0.15	136	2366		↓	
Pond	29.22	0.00	0	—	2230	2:52	
Trailhead East	29.70	—	—	—	1780	3:28	

* See below for navigational error and a ±45-minute loss.

Beavers have been recently active around the man-made pond. Richard noted cut saplings



Bog #310 is barely 3100 ft in elev. NOT 3120'. Maybe 3080'

- PH 5.0
- Temp. 48°F
- SUB dom + 2 ASH
- SUB SEEDL.
- BEECH not healthy
- LAP
- IMP
- VC
- HYBRD
- TINE
- DICENTRA
- DENTARIA
- GAL
- ARIS
- ALLUM
- IF
- SMILACINA
- ADONITUM above
- PARAUNITI
- ATHELYP
- PA
- TRIALOSE
- LIVERWORT
- Spring #1317
- Elev. 2366'

On descent to Kelly Hollow pond

	P	Δp	Δe	Calc	e map
A H 310	28.34"	0.94	882	—	3110
B Sub female	28.46	0.82	769	2997	
C PATIAR	28.56	0.72	675	2903	
D OST	28.84	0.44	413	2641	
E Top steep	28.77	0.41	385	2613	
F Pharus	28.92	0.36	338	2566	
G BAS will	28.96	0.32	300	2528	
H pond	29.28	0.00	0	—	2228

$$\frac{3110 - 2228}{29.28 - 28.34} = \frac{882}{0.94} = 0.938$$

270-67A

11/8/05 from Bog # 310
with Emma Bachman

Timetable 5/27/03 with Laurie Meek

Kelly Hollow Trail head	9:35 AM	2:10 PM
Pond	10:05	1:40
Bog # 310	11:10 AM →	12:35 PM

p-270-67A

"new" small bog *

Assign #: Not 3005
Too shallow to core
Also elev 3100
[See map over]

Many probes 4" to 12" to
channers, One uprobe
wedged in 15" between
2 channers.

H₂O table 3"

Temp. 50°F

pH 4.5 low scale
4.3 high scale

Outlet to N, but drains soon
underground

Collected: red
1 Sp. Carex
Sphagnum

CINN dom.

Patchy Sphagnum

YB, RM & BC on edge

NO tree or shrub in bog.

VV NYF

\$
ERY
OX

5/29/01 with
Dick McIntosh

This is p. 270-67A